

COVID-19 FAQs

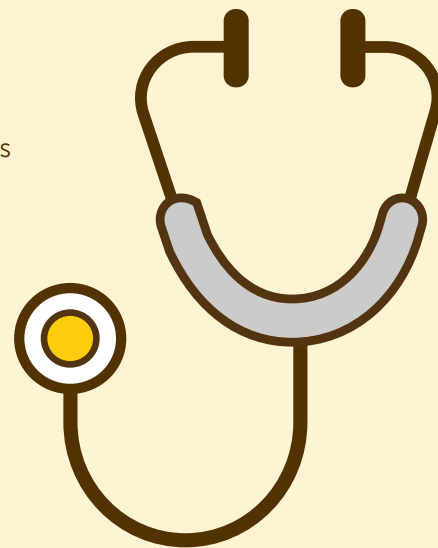
FREQUENTLY ASKED STUDENT QUESTIONS

» **Do I need to continue my adherence to USF's Four General Practices after I receive the COVID-19 vaccine?**

Yes. Our collective, ongoing adherence to USF's Four General Practices, even after individuals have received the COVID-19 vaccination, plays a critical role in protecting ourselves and each other. Know that USF will continue these practices until we receive guidance from the Will County Health Department advising otherwise. (added 2/18/2021)

» **Will vaccination opportunities become available through USF?**

USF continues to work with local health officials as we continue to navigate the COVID-19 pandemic. Identifying vaccination opportunities for the USF campus community is one example of this. Should vaccination opportunities become available for the USF campus community, they will be communicated through USF email. If you are interested in acquiring the vaccine as soon as possible, you may want to consider contacting your home county's health department and your primary care physician about your vaccination options. (added 2/18/2021)



» **What should I do if I show one of the signs or symptoms related to COVID-19?**

You should not come on campus that day, or remain in your residence hall room and monitor yourself over the next 24-48 hour period. If the sign/symptom remains, you should be tested. Residents should contact Mollie Rockafellow, Dean of Students, at mrockafellow@stfrancis.edu if they desire a quarantine space.

» **What should I do if I show multiple signs or symptoms related to COVID-19?**

You should immediately get tested for COVID-19 and only return to campus or leave your residence hall room when: 1) your test results come back negative, and 2) you show no further symptoms for a 24-hour period. Residents should contact Mollie Rockafellow, Dean of Students, at mrockafellow@stfrancis.edu if they desire a quarantine space.

» **What should I do if I have been in close contact with someone who has shown one or more signs or symptoms related to COVID-19?**

First, understand what close contact is. This means direct contact for more than a collective 15 minutes within a 24-hour period. The complete CDC definition is listed on the reverse side of this flyer. You should also not come on campus, or leave your residence hall room until the person that showed one sign or symptom is symptom-free for 24 hours. If the person had multiple signs/symptoms, you should also wait until the test results come back before returning to campus or removing yourself from quarantine. Residents should contact Mollie Rockafellow, Dean of Students, at mrockafellow@stfrancis.edu if they desire a quarantine space.

» **What should I do if I test positive for COVID-19?**

You need to isolate immediately off-campus, or if you are a resident student, you need to either isolate off-campus or move to one of the University's temporary isolation rooms. Students must keep in contact with their primary care provider and the Wellness Center at 815-740-3399. You must also complete the COVID campus leave form here: cm.maxient.com/reportingform.php?UnivofStFrancis&layout_id=11. Once this form is complete, Academic Advising will reach out to your instructors.



UNIVERSITY OF ST. FRANCIS
1920-2020

SAINTS UNITED
We're glad to have you home.

stfrancis.edu/saints-united

FREQUENTLY ASKED STUDENT QUESTIONS (cont.)

» When can I return to campus after I test positive for COVID-19?

The minimum time will be ten days from the onset of the symptoms, but you also must be in consultation with a medical provider. Besides receiving a written medical release from the provider before you can return to campus, you must be in isolation for seven days after the test results come back positive, or 10 days have passed since the symptoms began (whichever is longer). You must also be fever free for 72 hours (without the use of medication) and showing signs of improvement for all other symptoms.

» What if I test positive for COVID-19 but am asymptomatic?

You must isolate for 10 days from the day that you tested positive and receive a written release from your medical provider before you can return to campus.

» What else can I do if I do not want to be tested?

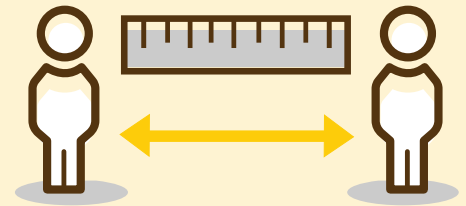
You must quarantine for a period of 14 days.

» What must I do if I travel out of the country?

You must quarantine for a period of 10 days upon your return.

» What if I choose to travel to a U.S. COVID-19 “hot spot”?

You should be extra careful how you go about in this area, then monitor your symptoms over a two-week period. Remember that while there are currently no quarantining/isolation restrictions, travel to a known “hot spot” carries higher risk of transmission of the disease.



» Who should I communicate with if I have COVID-19-related symptoms and will not be attending class or work?

Students should contact their instructors or supervisors directly.

DEFINITIONS RELATED TO FAQS

Close Contact:

- » Living in the same household or residence hall room as a person who has lab-confirmed COVID-19;
- » Providing care in a household for a person who has lab-confirmed COVID-19;
- » Being within 6 feet of an infected person for a cumulative total of 15 minutes or more over a 24-hour period starting from 2 days before illness onset (or, for asymptomatic patients, 2 days prior to test specimen collection) until the time the patient is isolated. Individual exposures are added together over a 24-hour period (e.g., three 5-minute exposures for a total of 15 minutes);
- » In direct contact with secretions from a person who has lab-confirmed COVID-19 or who was diagnosed with COVID-19.

Isolation: This term is used to separate people infected with the virus from people who are not infected.

Quarantine: This term is used to keep someone who has been exposed to COVID-19, but is not ill, away from others.

NOTICE:

Answers to all questions are based on our USF Preparedness Plan and current guidelines from:

- » CDC (Center for Disease Control),
- » IDPH (Illinois Department of Public Health),
- » IBHE (Illinois Board of Higher Education) and
- » WCHD (Will County Health Department) guidelines.

These answers could change as guidelines change.