

# SPARK STUDENT INTEREST IN STEM

## Making STEM Teaching Relevant Using Industry Partnerships

**June 12-16, 2023**

8 a.m. - 4 p.m. at the University of St. Francis, Joliet

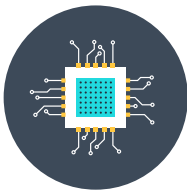
**WITH SITE VISITS TO LOCAL HOST BUSINESSES**

Professional learning opportunity for educators serving students in grades 6-12

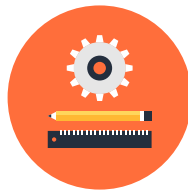
**SCIENCE, MATH, CAREER AND TECHNICAL, COUNSELORS**



SCIENCE



TECHNOLOGY



ENGINEERING



MATHEMATICS

### Course Information

#### OPTION I - GRADUATE CREDIT

- Earn three (3) graduate credit hours
- \$400 per attendee
- Register at [stfrancis.edu/real/courses](https://stfrancis.edu/real/courses) under Science Education | STEM. Choose the course registration for REAL 695 B Making STEM Teaching Relevant

#### OPTION II - PD HOURS ONLY

- Earn 37.5 PD clock hours\* (no graduate credit)
- Contact Gina Korczak for details  
[gkorczak@stfrancis.edu](mailto:gkorczak@stfrancis.edu)

Explore how STEM content matter is applied in exemplar area businesses.\*

- **AuxSable**
- **Bunge Loders Croklaan**
- **DuPont**
- **Stepan Company**

Connect with leading-edge research, applied science, integrated cannabis/medical marijuana, and technology applications

Explore industrial Internet of Things applications

Discover ways environmental science and chemistry combine to keep people and communities safe

Share STEM lessons and connections to motivate and teach students

Enhance your ability to prepare students for future success as highly-skilled employees in a global workforce.

Increase your understanding of essential skills with real world, relevant examples to enhance instruction.

SCAN ME



[stfrancis.edu/real/courses](https://stfrancis.edu/real/courses)

\*USF is an approved professional development provider with the Illinois State Board of Education. Businesses noted are subject to change.

**TR****P** **THREE RIVERS  
EDUCATION  
PARTNERSHIP**

  
**UNIVERSITY OF  
ST. FRANCIS**  
COLLEGE OF EDUCATION

[real@stfrancis.edu](mailto:real@stfrancis.edu) | 815-740-3699